

## 5355 CATCH BASIN INLET

Heavy duty

With Type M1 heavy duty grate

Approximate 540 sq. in. open area

Steel frame and grate available in all sizes

All available with 3 or 4 flanges

Options

Adjusting risers

Beehive grate

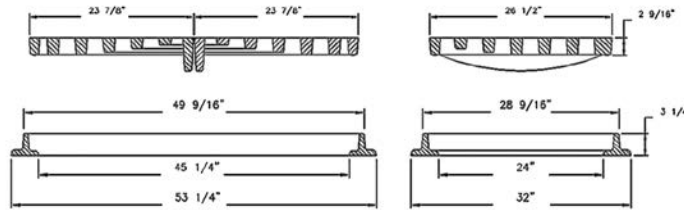
Bolted assembly

Special lettering

T1 4' hood



5355Z frame with Type M4 grates illustrated



**Type M3 Grate**  
Approx. 208 sq. in. open area  
2 grates required



**Type M4 Grate**  
Approx. 270 sq. in. open area  
2 grates required



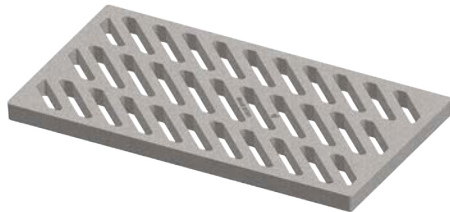
**Type M5 Vane Grate**  
Approx. 205 sq. in. open area  
2 grates required



**Type M6 ADA Grate**  
Approx. 140 sq. in. open area  
2 grates required



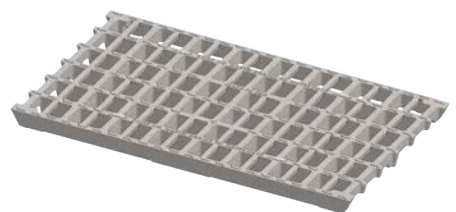
**Type M7 Ductile Grate**  
Approx. 326 sq. in. open area  
2 grates required



**Type M1**  
Approx. 465 sq. in. open area  
Single grate



**Type M8 Grate**  
Approx. 639 sq. in. open area  
Single grate with "DUMP NO WASTE!" lettering and fish image



**Type M9 Grate**  
Approx. 686 sq. in. open area  
Single grate with "DUMP NO WASTE!" lettering and fish image



**Type O beehive grate (Non-traffic)**  
Approx. 341 sq. in. open area  
Single grate

Available frames for 5355 covers and grates

Catalog Number	Frame Height
5355	3 1/4
5356	8
5357	10 1/8

Note: All dimensions are in inches  
\*Steel frame available.

Supplied By:



877-903-7246

www.trenchdrainsupply.com

